



# Buckhead Community Improvement District

## **ADDENDUM #1**

### **Request for Qualifications**

#### **To Provide**

**Surveying, Geotechnical and Subsurface Utility Engineering (SUE) Services  
for the PARK OVER GA400 Project**

**RFQ-073118**

**Qualifications Due: July 31, 2018**

**Buckhead Community Improvement District  
3340 Peachtree Road, N.E.  
100 Tower Place, Suite 1640  
Atlanta, Georgia 30326**

## ADDENDUM #1

### REQUEST FOR QUALIFICATIONS

RFQ-073118

#### Surveying, Geotechnical and Subsurface Utility Engineering (SUE) Services for the Park Over GA400 Project

**QUESTION:** Given the scope of work for this RFQ, could you please confirm that the prime consultant for this effort needs to be prequalified in GDOT categories 3.02, 3.03 and 3.05?

**RESPONSE:** The GDOT Prequalifications for the Prime Consultant have been revised to include Area Classes 3.02, 3.03 and 3.05 **OR** 5.01 (Land Surveying). The Team prequalifications remain unchanged. The revised **Exhibit I** is attached as part of Addendum #1.

---

**QUESTION:** Can Buckhead CID confirm that it is not required for the Prime Consultant to be prequalified in the survey and geotechnical area classes?

**RESPONSE:** The GDOT Prequalifications for the Prime Consultant have been revised to include Area Classes 3.02, 3.03 and 3.05 **OR** 5.01 (Land Surveying). The Team prequalifications remain unchanged. The revised **Exhibit I** is attached as part of Addendum #1.

---

**QUESTION:** Exhibit I requires the Prime Consultant to be prequalified in roadway design-related area classes, supported by survey, SUE and geotechnical area classes by the entire team. Is it Buckhead CID's intent that this contract be led by an engineering design firm, in anticipation of design services being added to the scope at a later date?

**RESPONSE:** This solicitation should be considered a stand-alone project. Procurement for design services will be considered at a later date.

**EXHIBIT I**

## Project/Contract

1. Project Number(s): N/A
2. PI Number(s): N/A
3. County(ies): Fulton
4. Description: Surveying, Geotechnical and Subsurface Utility Engineering (SUE) Services for the Park Over GA400 Project
5. Required Area Classes:

Prime Consultants are defined as the firm submitting the Statement of Qualifications and the firm with whom BCID will contract. The Team is defined as the Prime Consultant and their sub-consultants, who are considered team members. The Prime Consultant must be prequalified in the Area Classes identified below in Section 5.A. The Prime Consultant or sub-consultant team members must be prequalified in the Area Classes identified below in Section 5.B. Respondents should submit a summary form (example provided in **Exhibit IV**) which details the required area classes for the Prime Consultant and all sub-consultants or joint-venture of consultants on the team listed in the Statement of Qualifications. The area classes listed on the summary form must meet all required area classes or the team will be disqualified. The Prequalification Expiration Date must be current by the deadline stated for this RFQ.

A. The **Prime Consultant** **MUST** be prequalified by GDOT in the area classes listed below:

Number	Area Class
3.02	Two-Lane or Multi-lane Urban Roadway Design
3.03	Multi-Lane Urban Roadway Widening and Reconstruction
3.05	Multi-lane Urban Interstate Limited Access Design

**OR**

Number	Area Class
5.01	Land Surveying

B. The **Team** (either the Prime Consultant and/or one or more of their sub-consultant team members) **MUST** be prequalified by GDOT in the area classes listed below:

Number	Area Class
5.01	Land Surveying
5.02	Engineering Surveying
5.03	Geodetic Surveying
5.04	Aerial Photography
5.05	Photogrammetry
5.06	Topographic Remote Sensing
5.07	Cartography
5.08	Overhead/Subsurface Utility Engineering (SUE)
6.01(a)	Soil Survey Studies
6.01(b)	Geological and Geophysical Studies
6.02	Bridge Foundation Studies
6.03	Hydraulic and Hydrologic Studies (Soils & Foundation)

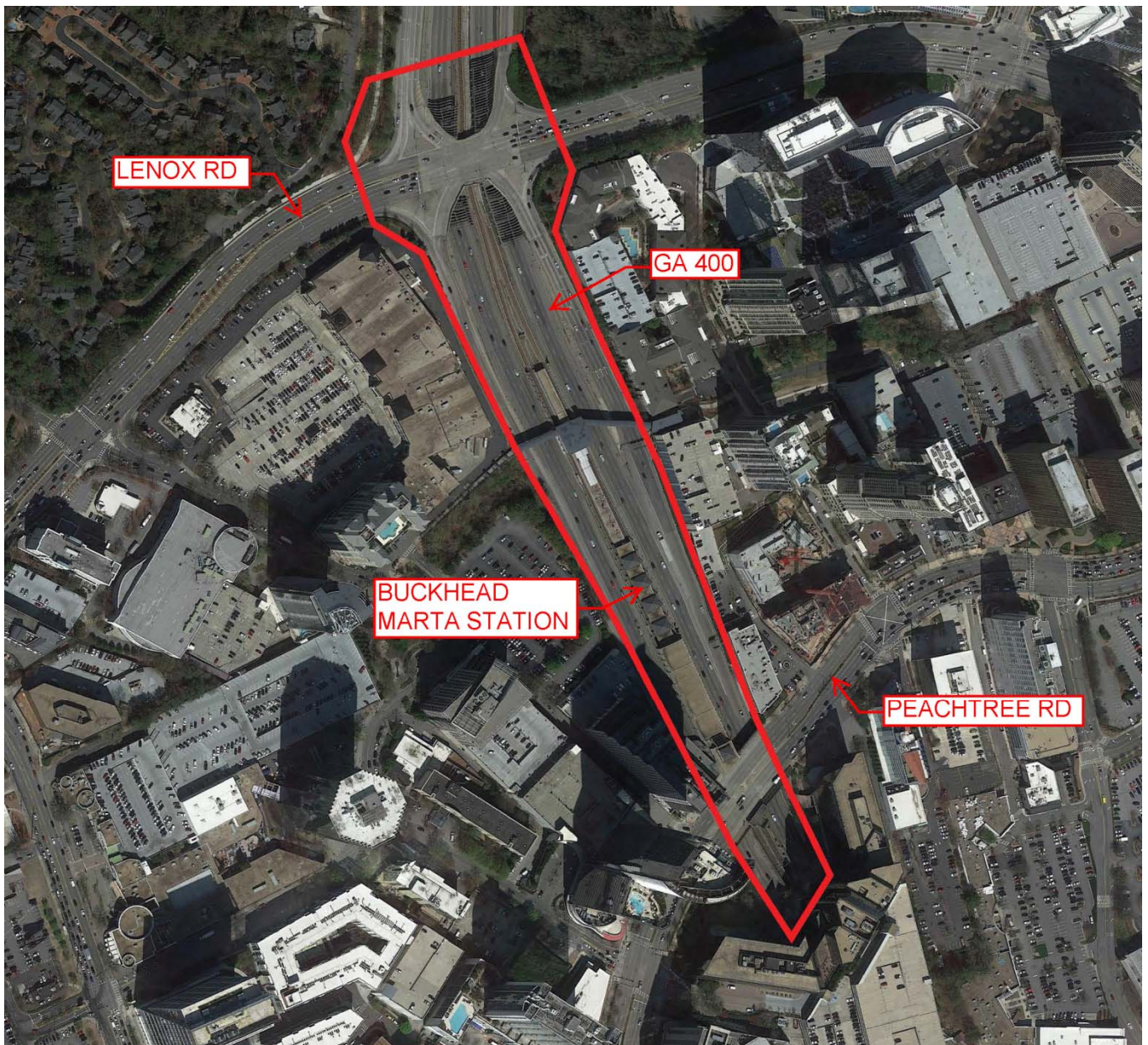
6. Scope:

The Consultant shall provide:

Development of a comprehensive survey database that will be used to design the Park Over GA400 project. All deliverables shall be in accordance with, but not limited to, the Plan Development Process (PDP), Electronic Data Guidelines (EDG), GDOT Automated Survey Manual, GDOT Design Policy Manuals & Guides, Plan Presentation Guide (PPG), and the Environmental Procedures Manual (EPM).

The survey limits, which are subject to change, are generally defined as the GA 400 right-of-way between Peachtree Road (SR 141) and Lenox Road (SR 141 Connector), including the Buckhead MARTA transit station. As needed, the consultant shall provide subsurface utility engineering data and geotechnical studies to supplement the mapping and field topography survey data in this area.

The consultant will be required to coordinate with utility companies and various agencies, including GDOT, MARTA and the City of Atlanta to obtain and verify existing as-built surveys and geotechnical data.



A. Survey:

1. Complete Inroads Database and Survey Control Package
2. Mapping and Field Topography Surveys
3. Property Survey
4. Property Information and Owners Report
5. Subsurface Utility Engineering (SUE), as needed
6. Survey Enhancements, as needed
7. Complete stream hydraulic surveys, as needed
8. Extended Survey limits, as needed

B. Deliverables:

1. Approved Survey Control Package
2. Approved Survey Database
3. Soil Survey Studies, as needed
4. Existing Utility File (UTLE): QL B-D
5. Bridge Foundation Investigations (BFI's), as needed

C. Quality Assurance/Quality Control Reviews for all deliverables.

D. Attendance in and meeting minutes of monthly meetings to discuss progress and/or issues (additional meetings may be required to resolve major project issues).

7. Available Information:

Park Over GA400 Concept Study Report (See Attachment 2)

8. Related Key Team Leaders:

- A. Roadway Design Lead
- B. Survey Lead
- C. Geotechnical Lead
- D. Subsurface Utility Engineering (SUE) Lead